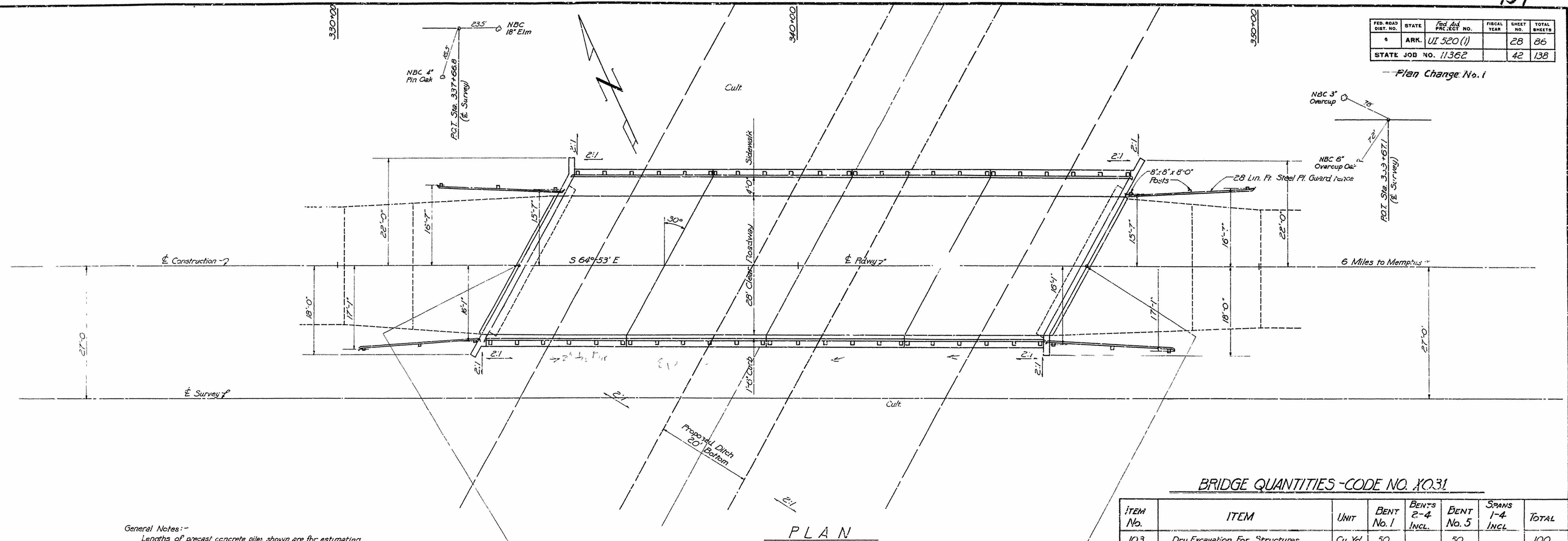


FED. ROAD DIST. NO.	STATE	Fed And PROJECT NO.	FISCAL YEAR	SHEET NO.	TOTAL SHEETS
6	ARK.	UI 520 (1)		28	86
STATE JOB NO. 11362				42	138

— Plan Change No. 1



General Notes:-

Lengths of precast concrete piles shown are for estimating purposes only. Actual lengths to be determined in the field. Drive one pile in Bents No. 1 and No. 3 as test piles.

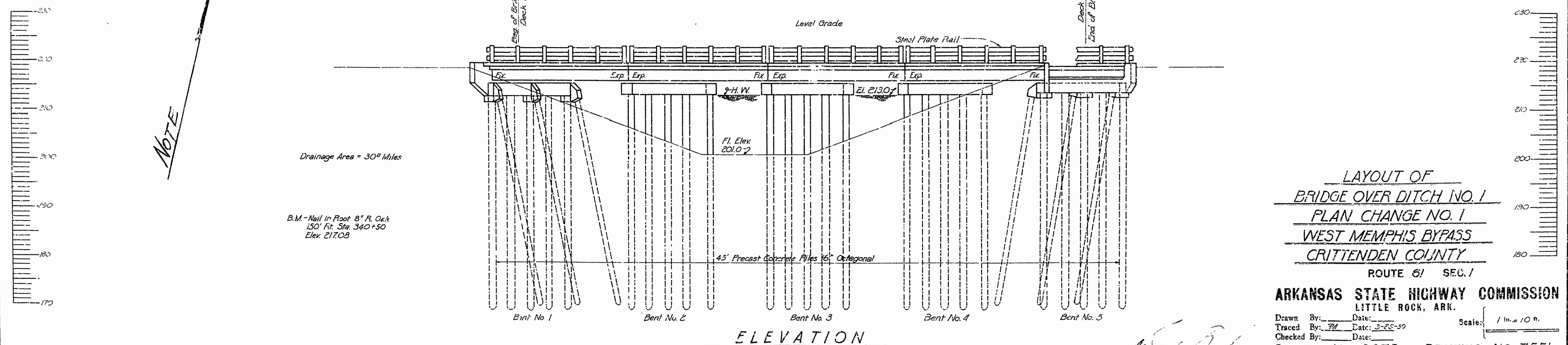
For details of Bents and Spans see Drawgs. 7352-7355 Incl. Loading: H20 S16

Stresses: Struct. Steel = 18,000 %
Reinforcing St = 18,000 %
5" Concrete = 1,000 % n=10

Note: Detail Drwgs. 7552-7555 incl. show
Rt. Fwd skew bridge is to be constructed
on Lt. Fwd. skew as shown by this layout

BRIDGE QUANTITIES - CODE NO. X031

ITEM No.	ITEM	UNIT	BENT No. 1	BENTS 2-4 INCL.	BENT No. 5	SPANS 1-4 INCL.	TOTAL
103	Dry Excavation For Structures	Cu. Yd.	50		50		100
SP#802	Class "S" Concrete For Bridges	Cu. Yd.	15.79	2406	15.65	98.00	153.50
803	Reinforcing Steel	Lb.	1,747	3,003	4,776	17,344	23,870
SP#804	Concrete Filling	Lin. Ft.	360	675	360		1,395
SP905-3	Steel Plate Guard Rail	Lin. Ft.				244	244
807	Structural Steel in Beam Spans	Lb.	865		865	17,090	78,820
925	Steel Plate Guard Fence	Lin. Ft.	56		56		112
529	Bridge Name Plates (Type "A")	Each	1		1		2



LAYOUT OF
BRIDGE OVER DITCH NO. 1
PLAN CHANGE NO. 1
WEST MEMPHIS BYPASS
CRITTENDEN COUNTY

ROUTE 6/ SEC. 7

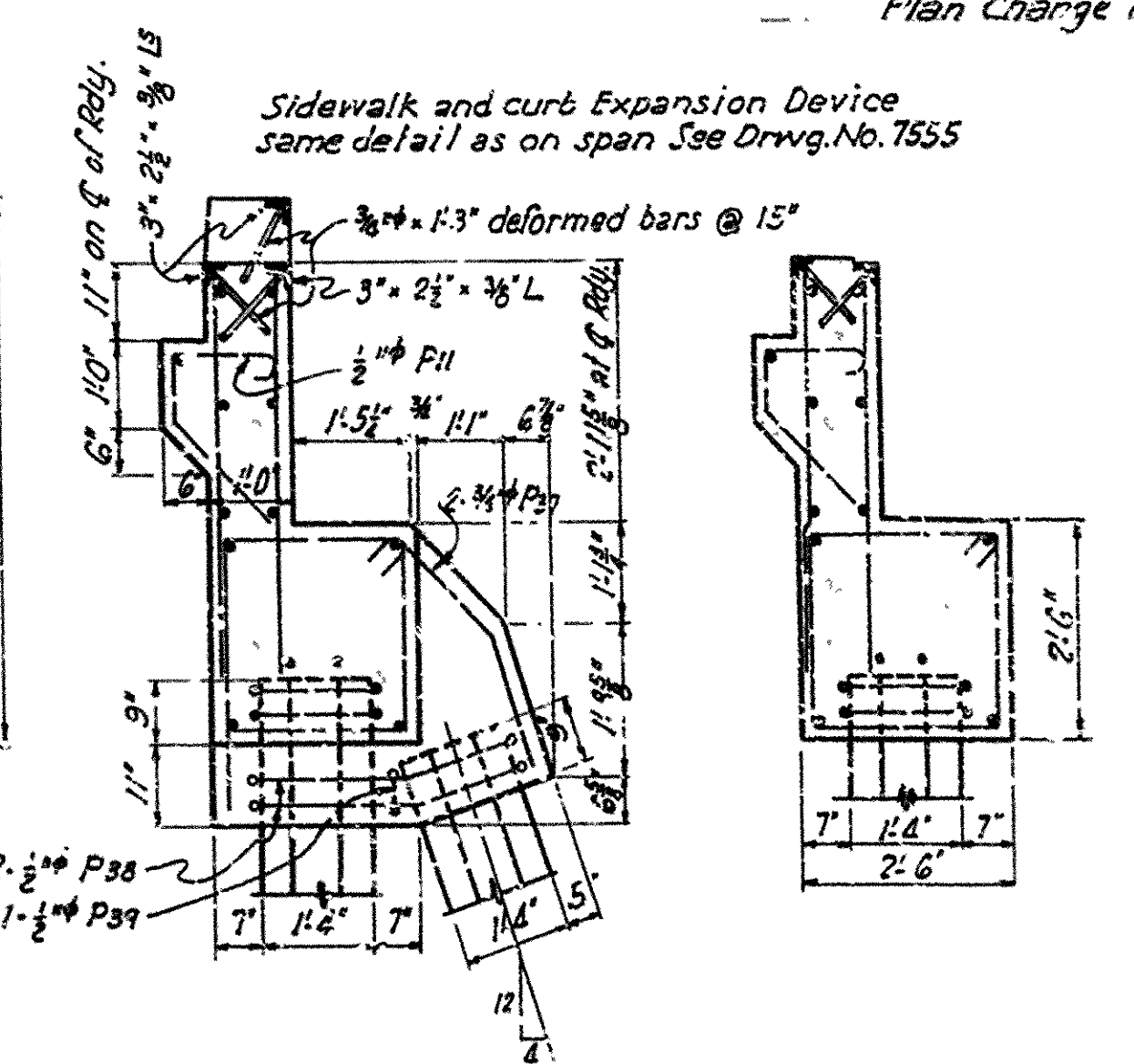
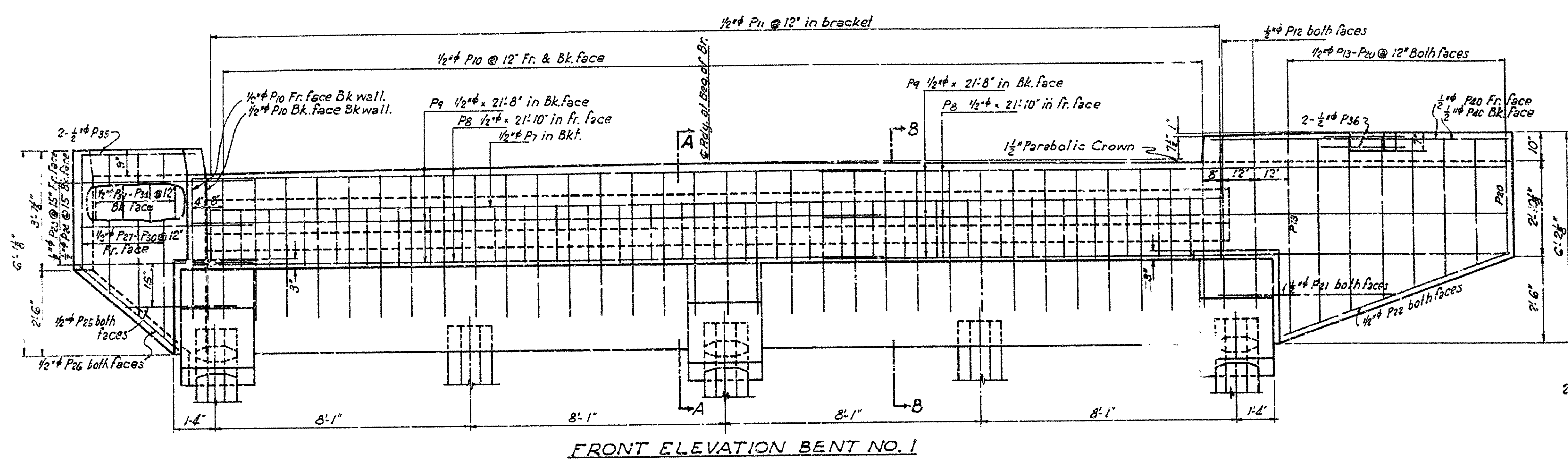
ARKANSAS STATE HIGHWAY COMMISSION
LITTLE ROCK, ARK.

Drawn By: _____ Date: _____
Traced By: *PM* Date: *3-25-50*
Checked By: _____ Date: _____
Scale: $\frac{1 \text{ in.} = 10 \text{ ft.}}$
BRIDGE NO. 2673 DRAWING NO. 755/
Revised

W. J. Brown
Bridge Design Engineer

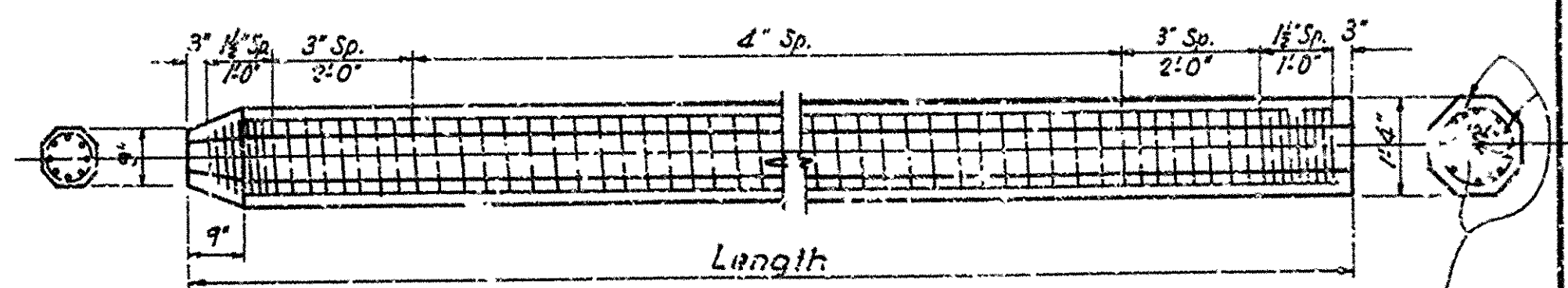
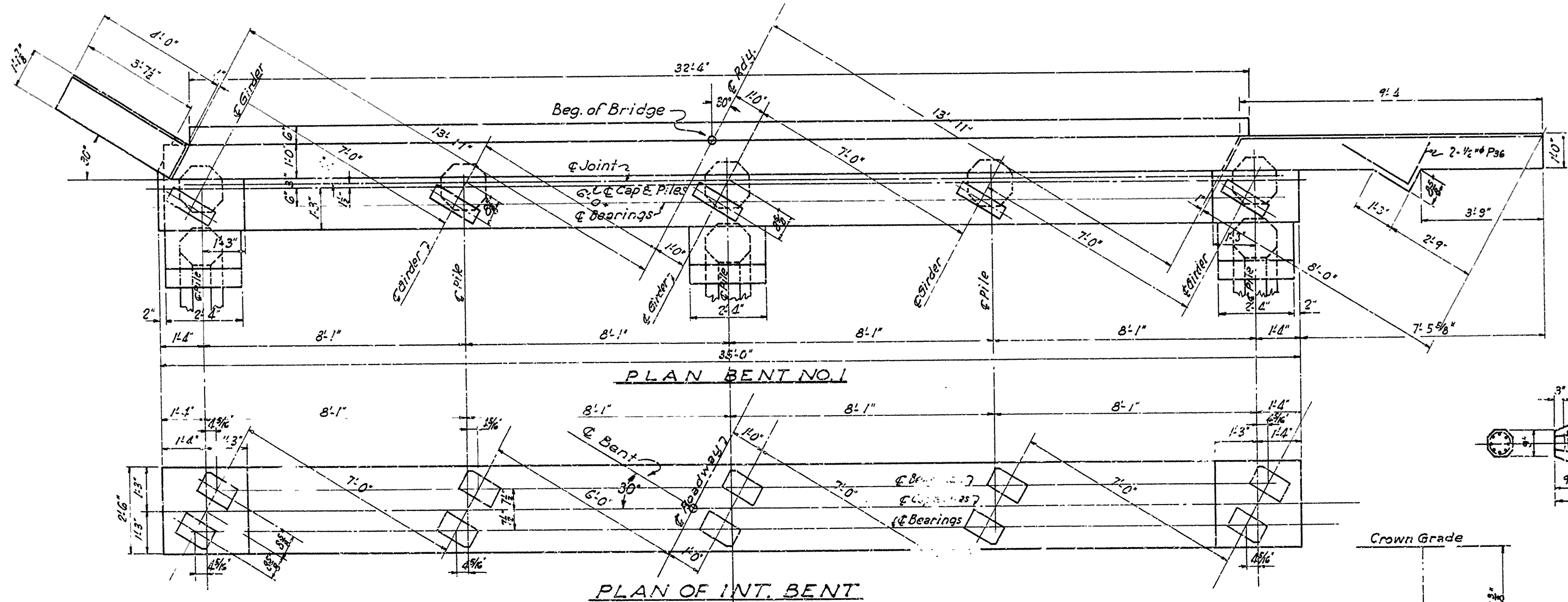
FED. ROAD DIST. NO.	STATE	PROJECT NO.	FISCAL YEAR	SHEET NO.	TOTAL SHEETS
0	ARK.	(U.I. 5200)		29	86
STATE JOB NO. 11362					43/133

Plan Change No. 1

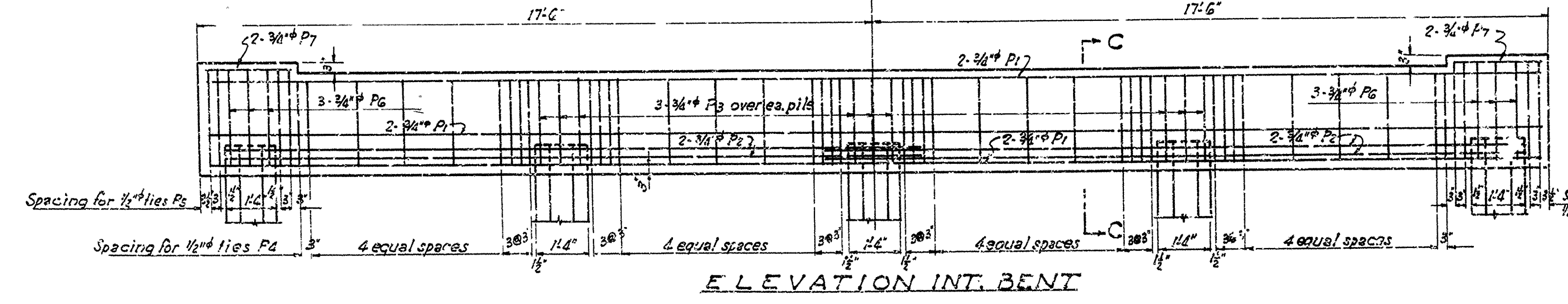
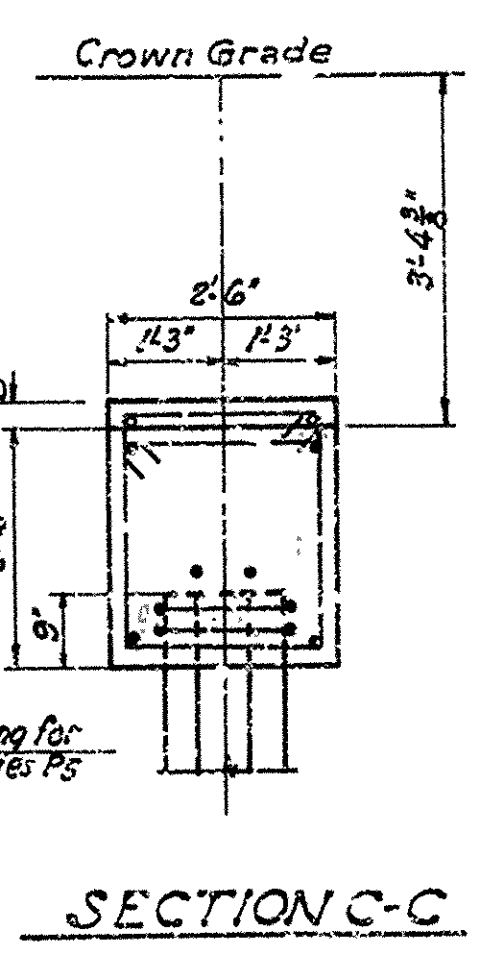


LIST OF BENT REIN. BARS

Mark	Size	Length	A	B	Diagram
P1	3/4"	35'-0"	15'	18'-3"	
P2	3/4"	6'-4"	2'-2"	2'-1"	
P3	3/4"	6'-4"	2'-2"	2'-4"	
P4	1/2"	9'-3"	2'-11"	2'-11"	
P5	1/2"	9'-9"	2'-11"	2'-4"	
P6	1/2"	5'-5"	5'	1'-11"	
P7	1/2"	3'-9"			
P8	1/2"	5'-10"	3'-10"	2'-0"	
P9	1/2"	5'-10"	3'-10"	2'-0"	
P10	1/2"	4'-6"	2'-6"	2'-0"	
P11	1/2"	1'-3"			
P12	3/4"	8'-0"			
P13	3/4"	3'-8"	2'-3"	1'-5"	



Reinforcing: Vertical bars { 8-3/4" lengths to 35' } spiral #4 wire
 For lengths over 45' Add 4-3/4" thru middle third of pile
 DETAILS OF 16" PRECAST CONCRETE PILE
 Pile to be driven to a minimum bearing of 32 Tons
 For General Notes See Drwg. No. 7555



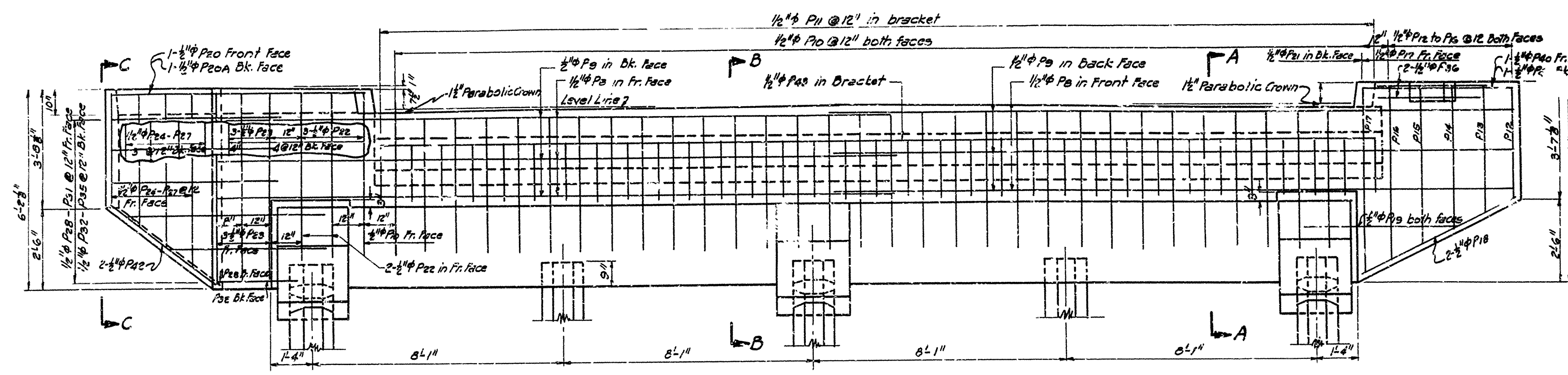
NOTE: This drwg. shows Rt. Fwd Skew Construct bridge #2673 on Opposite hand skew (Lt. Fwd.)

DETAILS OF BENTS NO. 1 TO 4 INCL. BRIDGE OVER DITCH NO. 1 WEST MEMPHIS BYPASS MEMPHIS MARION CONNECTION CRITTENDEN COUNTY ROUTE 61 SEC. 1

ARKANSAS STATE HIGHWAY COMMISSION
 LITTLE ROCK, ARK.
 Drawn By: L.A.M. Date: 1-22-50
 Traced By: E.H.W. Date: 1-26-50
 Checked By: Date:
 Bridge No. 2673 DRAWING NO. 7552

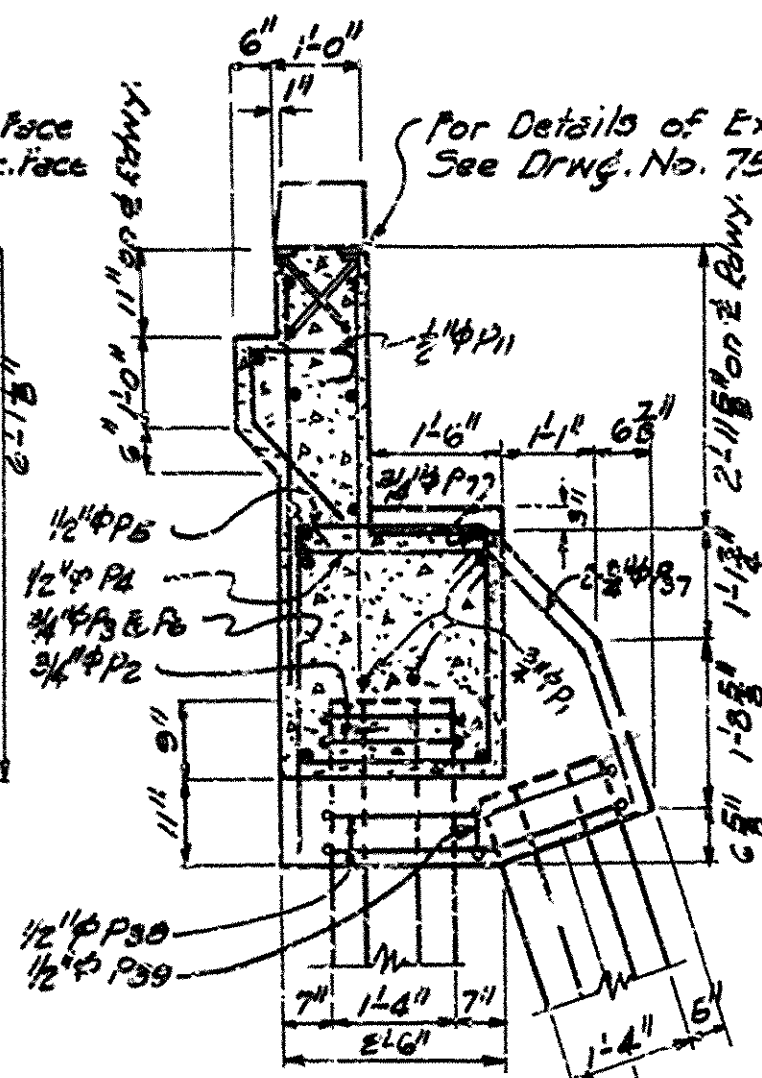
FED. ROAD DIST. NO.	STATE	PROJECT NO.	FISCAL YEAR	SHEET NO.	TOTAL SHEETS
	ARK.	U/ 520(1)		30	66
STATE JOB NO. 11362					44 138

Plan Change No. 1

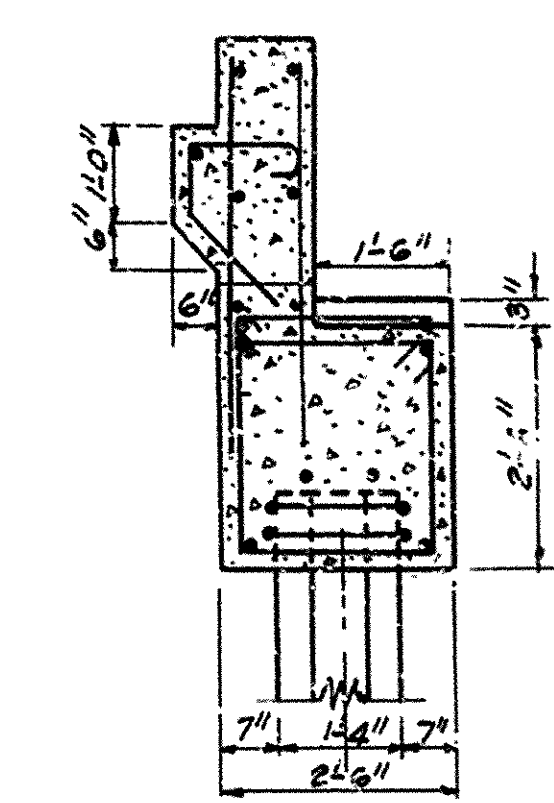


FRONT ELEVATION BENT NO. 5

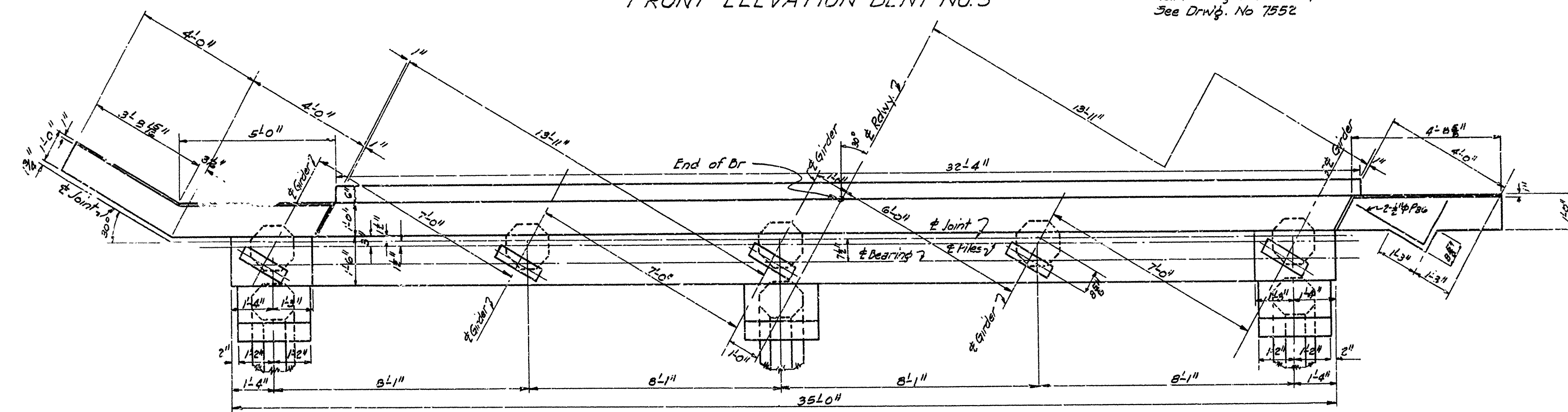
NOTE Reinforcing Steel in Cap Same as Bent No. 1 See Drawg. No. 7552



SECTION A-A



SECTION B-B



PLAN BENT NO. 5

LIST OF BENT BARS					Diagram	
Mark	Size	Length	A	B		
P ₁	3/4"	38'-0"	1'-5"	13'-5"		
P ₂	3/4"	6'-0"	2'-2"	2'-11"		
P ₃	3/4"	6'-10"	2'-2"	2'-4"		
P ₄	3/4"	9'-3"	2'-11"	2'-11"		
P ₅	3/4"	5'-9"	2'-11"	2'-4"		
P ₆	3/4"	5'-5"	5"	1'-11"		
P ₇	3/4"	3'-5"				
P ₈	3/4"	3'-0"				
P ₉	3/4"	3'-0"	2'-3"	1'-5"		
P ₁₀	3/4"	11'-3"				
P ₁₁	3/4"	5'-9"	1'-9"	3'-3"		
P ₁₂	3/4"	6'-9"	3'-3"	3'-6"		
P ₁₃	3/4"	5'-9"	3'-9"	2'-0"		
P ₁₄	3/4"	8'-2"	3'-9"	4'-5"		
P ₁₅	3/4"	8'-2"	3'-7"	4'-7"		
P ₁₆	3/4"	5'-1"	1'-7"	3'-6"		
P ₁₇	3/4"	6'-7"	3'-1"	3'-6"		
P ₁₈	3/4"	5'-7"	3'-7"	2'-0"		

GENERAL NOTES:
All concrete to be Class "5"
All exposed corners to have 3/4" chamfer unless otherwise noted.
Maximum computed bearing 33 Tons Per pile Bents 2 to 4 incl.
Drive to a minimum bearing of 35 Tons Per pile Bents 2 to 4 incl.
Maximum computed bearing 29 Tons Per pile Bents 1 & 5
Drive to a minimum bearing of 30 Tons Per pile Bents 1 & 5
For additional general notes See Drawg. No. 7555

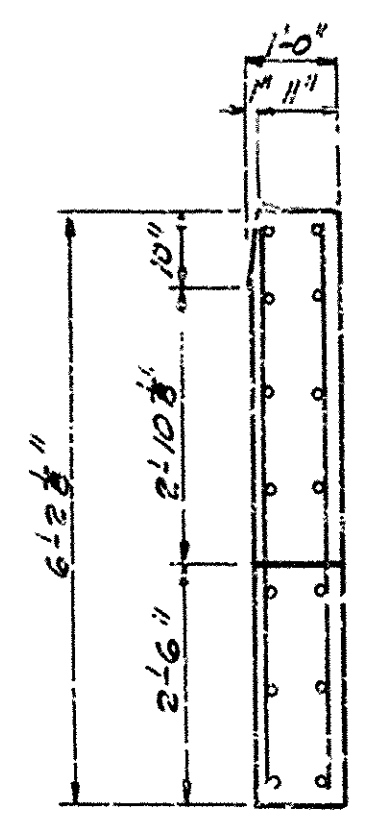
Note: This Drawg. Shows
Rt. Fwd. Skew. Construct
Br. 2673 on opposite
hand Skew (Lt. Fwd)
Plan Change # 1

DETAILS OF
BENT NO. 5
BRIDGE OVER DITCH NO. 1
WEST MEMPHIS BYPASS
MEMPHIS TO MARION CONNECTION
CRITTENDEN COUNTY
ROUTE 61 SEC. 1

ARKANSAS STATE HIGHWAY COMMISSION
LITTLE ROCK, ARK.

Drawn By: L.M.E. Date: 1-25-50
Traced By: L.M.E. Date: 1-27-50
Checked By: _____ Date: _____
BRIDGE NO. 2673 DRAWING NO. 7553

Scale: 1/2" = 1'



VIEW C-C



ROUTE 61 SEC. 1

ARKANSAS STATE HIGHWAY COMMISSION
LITTLE ROCK, ARK.

Drawn By: J. L. M. Date: 1-8-50
Traced By: FM Date: 1-24-50
Checked By: _____ Date: _____

Scale: $\frac{3}{8}$ " = 1'-0" *and as noted*

BRIDGE NO. 2673 DRAWING NO. 7554

FED. ROAD DIST. NO.	STATE	PROJECT NO.	FISCAL YEAR	SHEET NO.	TOTAL SHEETS
0	ARK.	11520(1)		52	86
STATE JOB NO 11362				46	133

Plan Change No. 1

LOADING H-20, S16

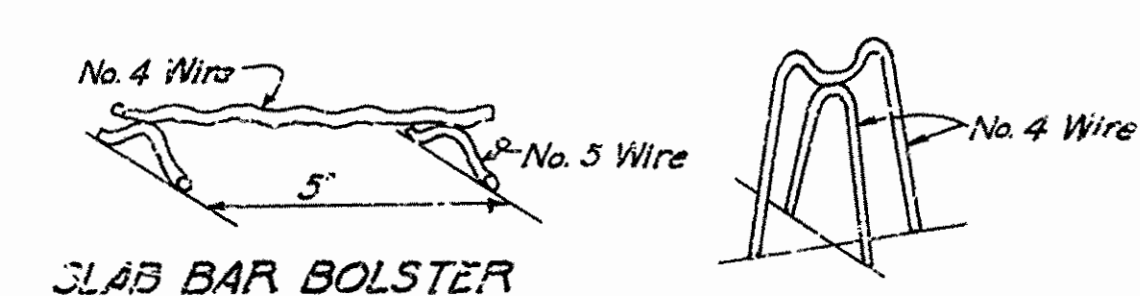
Load Distribution Sidewalk Stringer
Dead Load Per Ft. = 1300#/ft.
Roadway Live Load Per Ft. = 0.570 Truck Wheel
Sidewalk Live Load Per Ft. = 274#
Load Distribution Intermediate Stringers
Dead Load Per Ft. = 900#
Roadway Live Load Per Ft. = 1.40 Truck Wheels
Load Distribution Curb Stringer
Dead Load Per Ft. = 1050#
Roadway Live Load = 0.857 Truck Wheel

STRESSES

Structural Steel = 18,000 #/sq.
Reinforcing Steel = 18,000 #/sq.
Class "S" Concrete = 1,000 #/sq.

GENERAL NOTES

All Concrete to be Class "S". All exposed corners to have 1/2" chamfer unless otherwise noted.
Rivets 1/2" Open holes 1 1/2". Where bolts are indicated use machine bolts.
Structural shapes of equal or greater strength may be substituted for shapes shown but payment will be made on basis of shapes shown or those actually used whichever is the lesser.
All welded connections to be 1/2" fillet welds except as shown.
Shop Paint: All Structural Steel except surfaces in contact with concrete shall be given one coat of red lead and raw linseed oil before shipment.
Field Paint: First coat, white lead tinted with Lamp Black. Second coat Aluminum.
All bearing and roadway expansion devices to be paid for as "Structural Steel in Beam Spans."
Care shall be exercised to obtain 90° in the angle between flange and web of beams at bearing points.
The Steel Plate Guard Rail shall be of the type shown or an equivalent rigid type as approved by the engineer. The Steel Plate Guard Rail, including the concrete posts, shall be paid for at the unit price bid per linear foot for "Steel Plate Guard Rail."
This drawing shows general features of design only. Shop drawings shall be made in accordance with the specifications, submitted and approved before fabrication is begun.
In order to secure a good riding surface it will be required that the floor slab be struck off from curb to curb with a half span length longitudinal strike-off. The strike-off shall be sufficiently stiff so as to have no appreciable vertical deflection.
Bearings shall be finally seated on three (3) layers of burlap saturated with red lead. This work and material to be included in the unit price bid for "Structure: Steel in Beam Spans."
All reinforcing shall be accurately located in the forms and firmly held in place by means of steel wire chair supports adequate to prevent displacement during the course of construction and to keep the steel a proper distance from the forms.
Bar supports are to be sufficient in number and sufficiently heavy to properly carry the steel they support. Wire sizes shall not be less than shown.
Wire supports will not be paid for directly but will be considered subsidiary to the item of "Reinforcing Steel". Shop lists and diagrams must be submitted for approval.
Specifications: Arkansas State Highway Commission Standard Specifications for Road and Bridge Construction Adopted March 1st, 1940.



HIGH CHAIR

SLAB BAR BOLSTER

DETAILS OF

30'-0" I-BEAM SPAN - 8' CLEAR ROADWAY

30° SKEW RT. FWD.

BRIDGE OVER DITCH NO. 1

WEST MEMPHIS BYPASS

MEMPHIS TO MARION CONNECTION

CRITTENDEN COUNTY

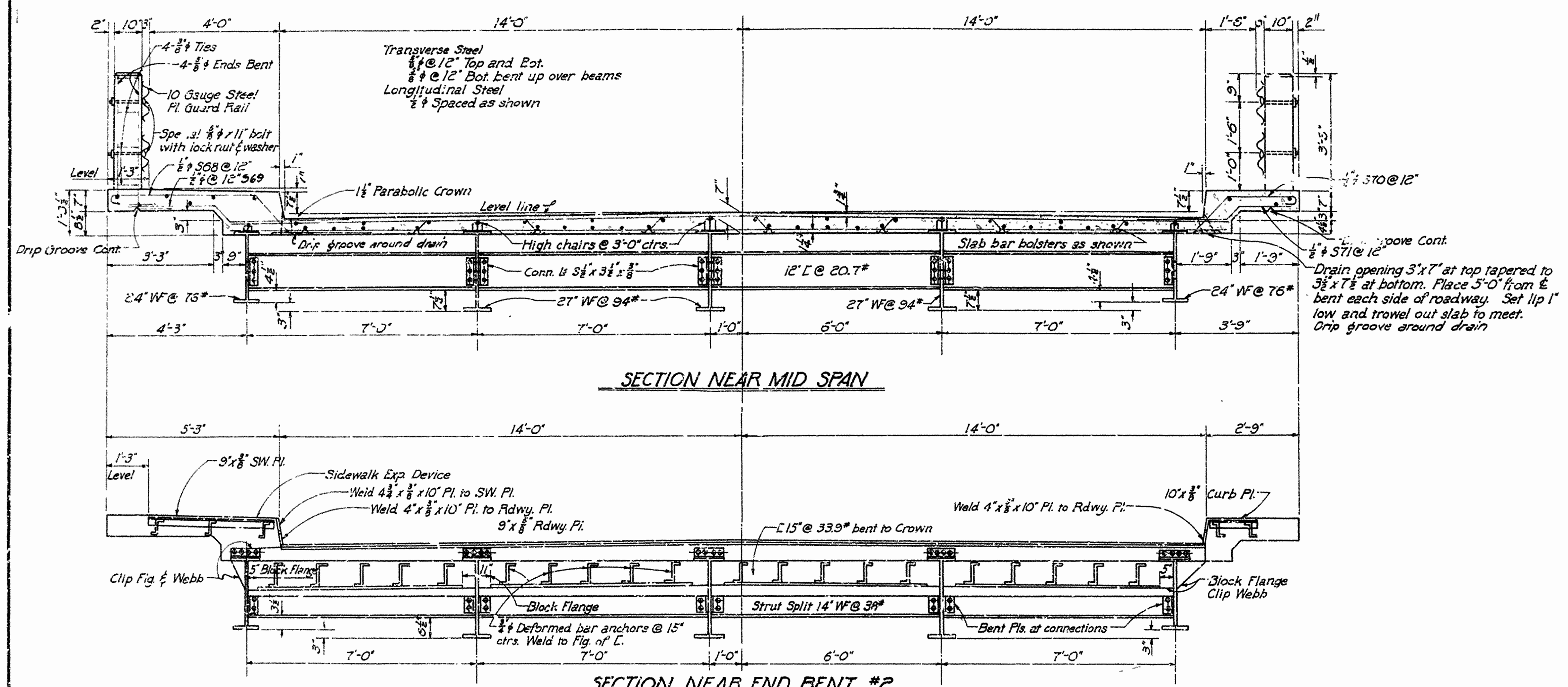
ROUTE 61 SEC 1

ARKANSAS STATE HIGHWAY COMMISSION
LITTLE ROCK, ARK.

Drawn By: L.A.M. Date: 1-19-50
Traced By: RM Date: 1-26-50
Checked By: Date:
BRIDGE NO. 2673 DRAWING NO. 7555

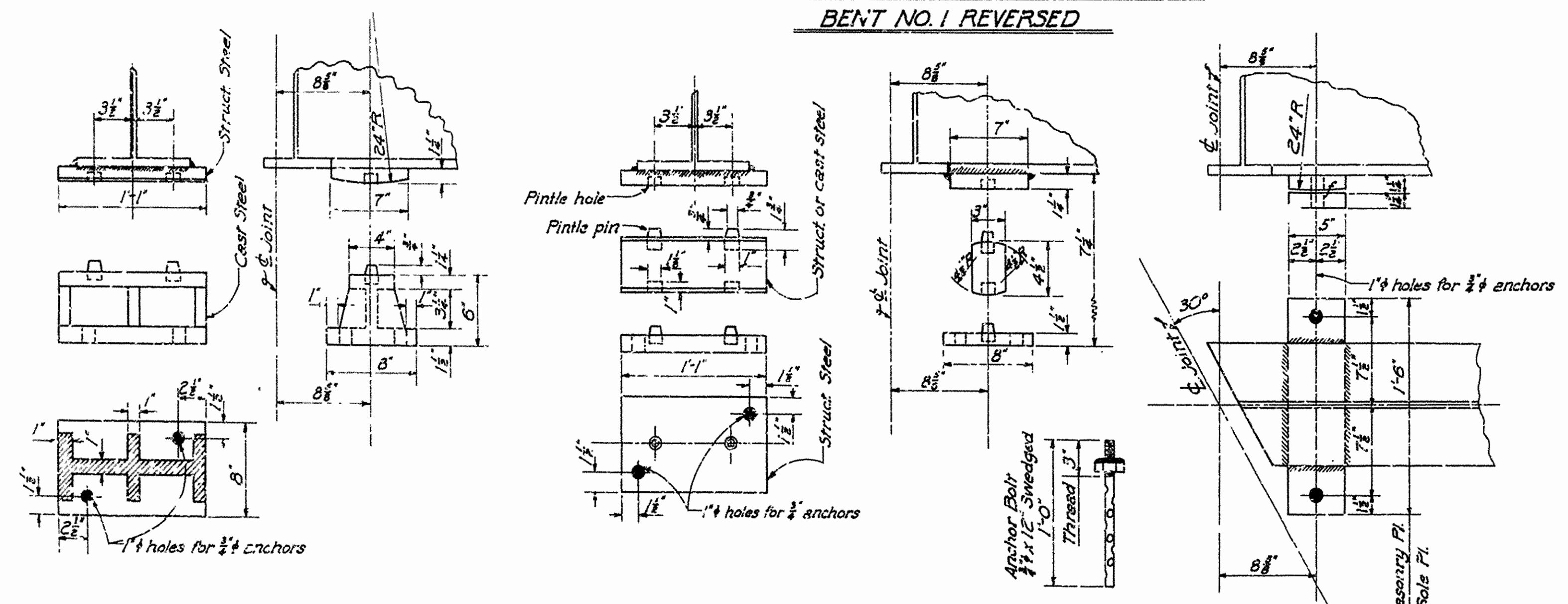
This Drawg. shows Rt. Fwd
skew. Construct Br 2673
on opposite hand skew
(Lt. Fwd.)
Plan Change #1

W.D. Brown
BRIDGE ENGINEER



SECTION NEAR MID SPAN

SECTION NEAR END BENT #2
BENT NO. 1 REVERSED



DETAILS OF BEARINGS
(Scale: 1 1/2" = 1'-0")

DETAILS OF PLATES AT END BENTS

FIXED SHOE